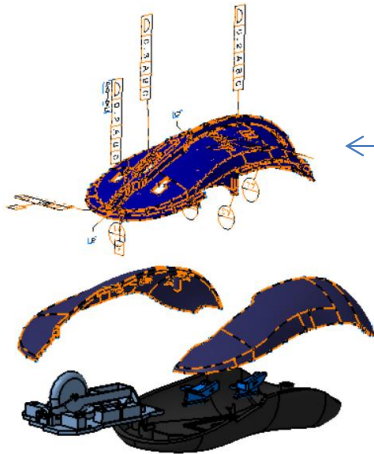


# How do we close the loop?

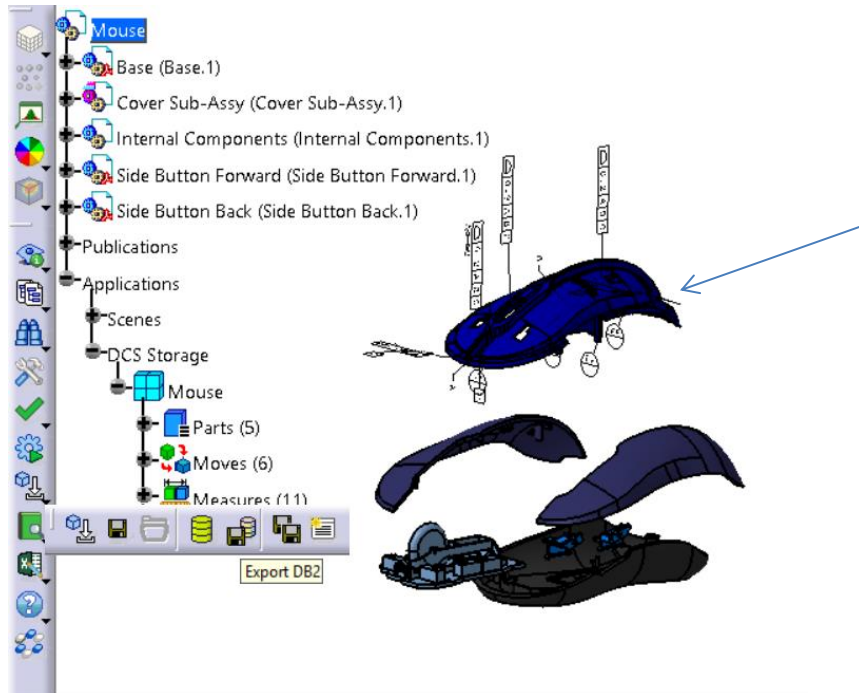
1. Chose the part or parts in your model you want to replace engineering tolerances with measured plant data tolerances



Replace GD&T tolerances with  
measured data for this part  
(Top Cover)

# How do we close the loop?

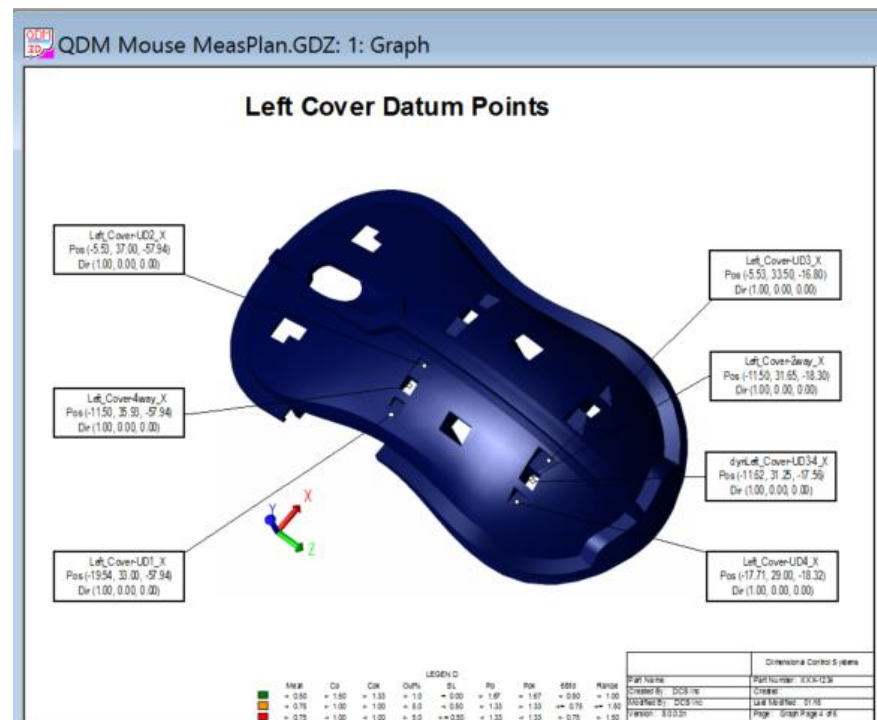
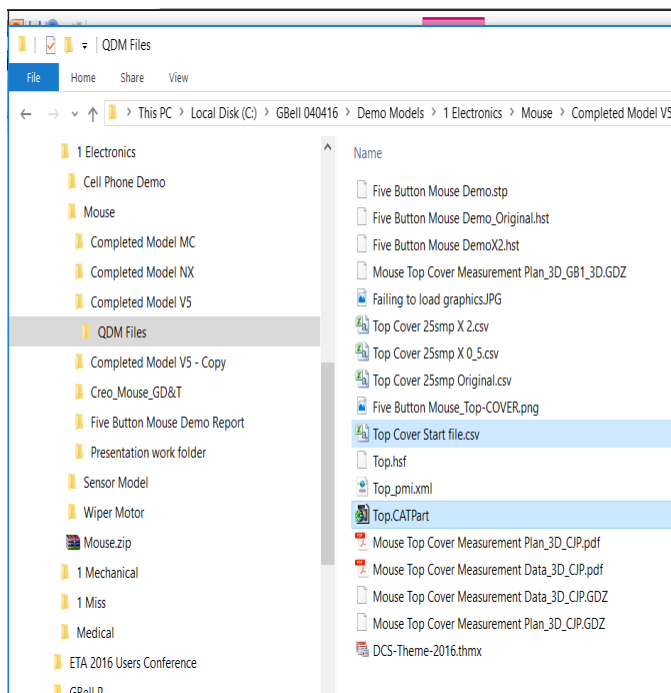
## 2. Export a data file for all points in the part



Click export DB2 and  
select the Top Cover

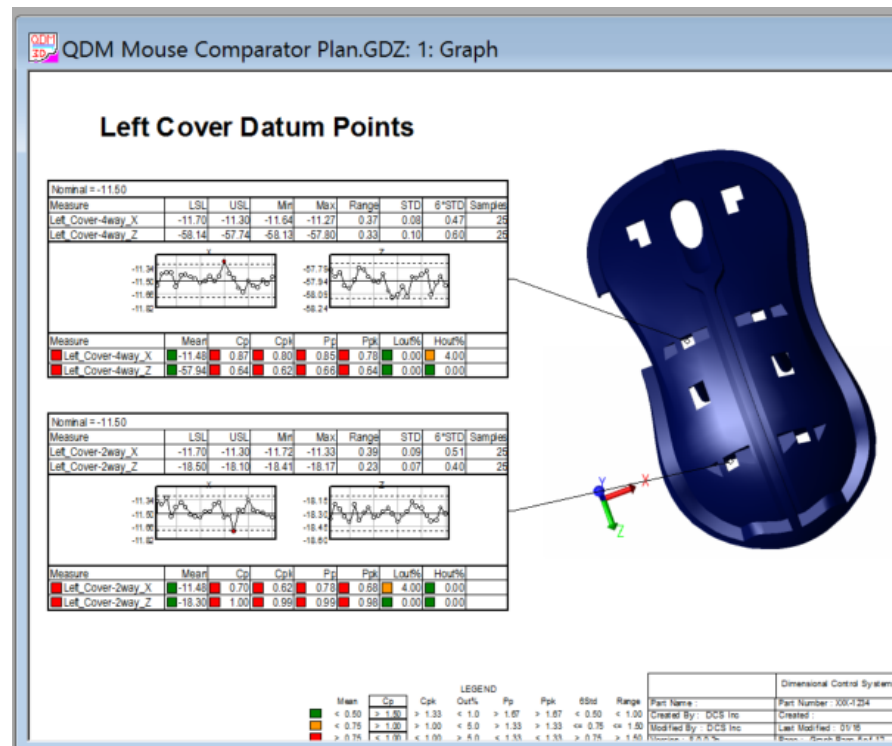
# How do we close the loop?

## 3. Import the Data file and the Cad file into QDM and generate a measurement plan



# How do we close the loop?

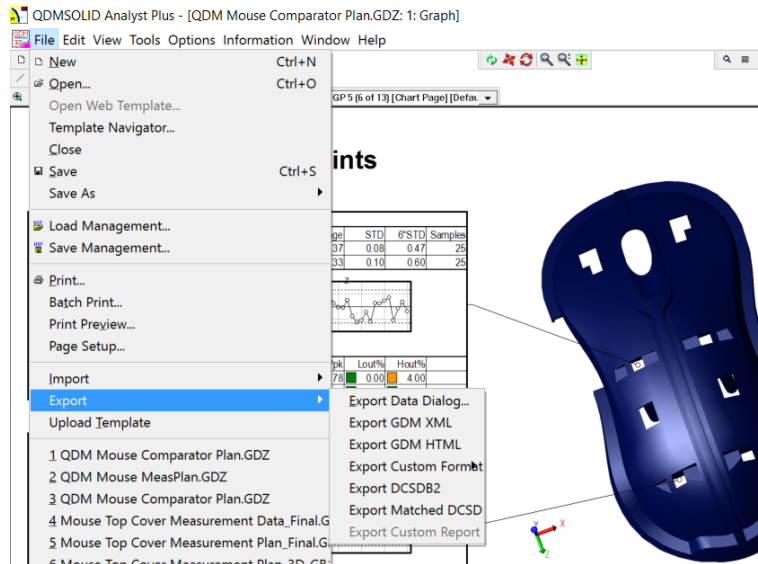
4. Duplicate the measurement plane report and modify it to begin receiving plant data



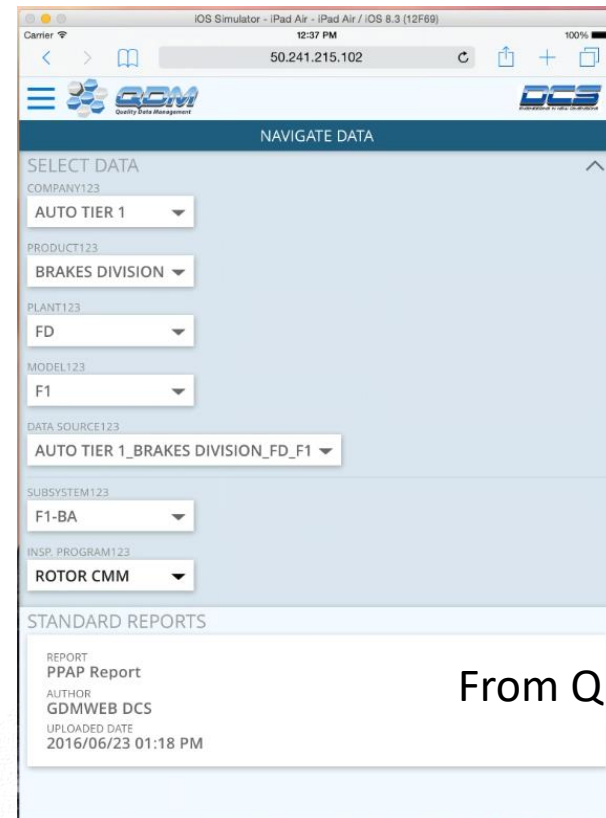


# How do we close the loop?

5. Export the measured data from QDM to import into your Tolerance analysis model



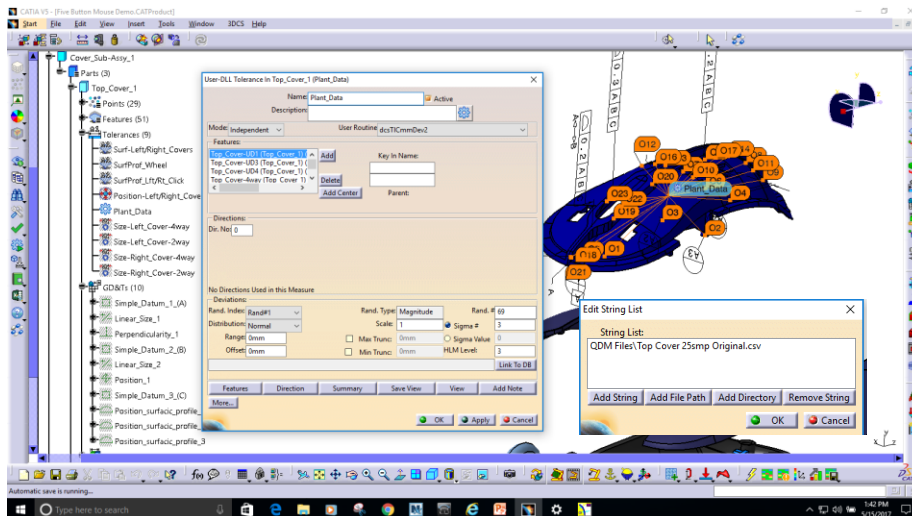
From QDM Analyst



From QDM Web

# How do we close the loop?

6. Add a DCS (CMMdev2) tolerance to the part
  - Add all part point to tolerance
  - Link tolerance to exported QDM data file
  - Turn off original GD&T tolerances on the part



- Rerun Simulation Results